



Flat Track Sliding System, Slido D-Line42 100S Set

For 1 Sliding Wood Door

Product details

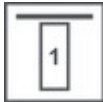
- rustic sliding door fitting with graphite black finish or in satin stainless steel visible functional details

Number of doors per system max.	1
Number of doors	1.00
For door material	wood
Model	100S
Running gear version	Running gear with anti-derailment device
For door weight	100 kg
Controller installation options	Wall mounting
For door thickness	35–45 mm
Adjustment facility	Not height adjustable
For door thickness min.	1 3/8"
For door thickness max.	1 3/4"
Door weight max.	220 lbs
Load bearing capacity	220 lbs.
For door width (inches)	Up to 48"
For door height (inches)	108"
Max. door weight	
Area of application	For wooden doors For 1-leaf sliding doors

Note on door width	depending on the running track
Running position	Top
Functionality	with anti-derailment device
Installation	Positive clamping of the door wing
Installation reference	<p>The running track can be shortened on site. The cut edge then requires reworking (ground and colour adapted in the case of a black track).</p> <p>Drilling distances for wall mounting the 2000 mm running track: 100/450/450/450/450/100, pre-drilled 5 times</p> <p>Drilling distances for wall mounting the 2500 mm running track: 125/450/450/450/450/450/125, pre-drilled 6 times</p>
Door processing	for screw fixing

Supplied with

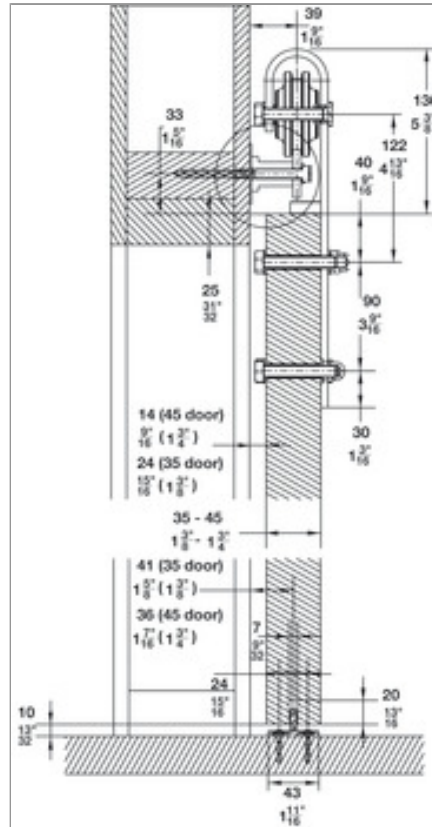
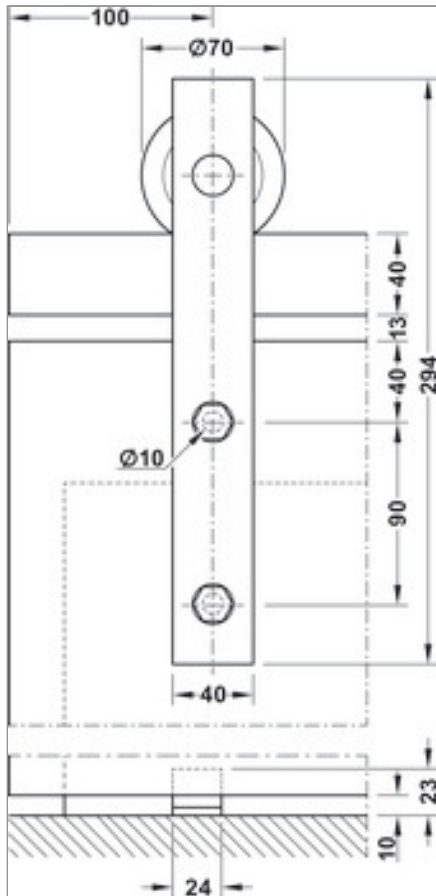
Straight hanger
 Upper running track
 Track stoppers
 Wall attachment
 Anti-derail block
 Floor guide
 Hexagon key
 Drill bit



Additional information

Soft close available

Line drawings



Item table (6)

For 1 Sliding Wood Door, 2 m Length, black	Item number 941.32.000
For 1 Sliding Wood Door, 2.5 m Length, black	Item number 941.32.004
For 1 Sliding Wood Door, 2 m Length, brown	Item number 941.32.005
For 1 Sliding Wood Door, 2.5 m Length, brown	Item number 941.32.006
For 1 Sliding Wood Door, 2 m Length	Item number 941.32.011
For 1 Sliding Wood Door, 2.5 m Length	Item number 941.32.012